



DELANEY® **NEXUS**
SMART LOCK

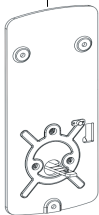
Quick Start Guide

In the Box

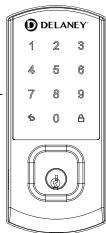
Keys



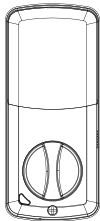
Mounting Plate
with mounting sticker
template included



Exterior
Touchscreen
Assembly



Battery
Cover

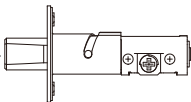


Interior
Assembly

Reset Pin



Latch



Strike
Plate



AA Alkaline
Batteries



Auto-Lock
Door Sensor



Wi-Fi
Gateway



Screws for Mounting
Plate

M5 x 1.18in

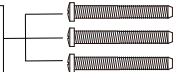
For 1.96 in. door thickness



Screws for Mounting
Plate

M5 x 1.57in

For 2.36 in. door thickness



Top Screws for
Smart Lock

M4 x .40in.



Bottom Screw for
Smart Lock

M4 x .55in.



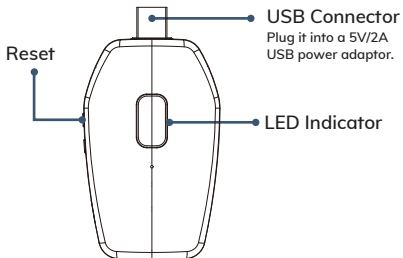
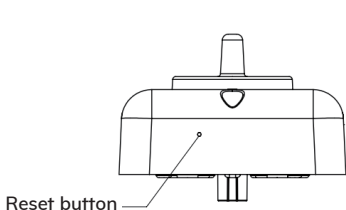
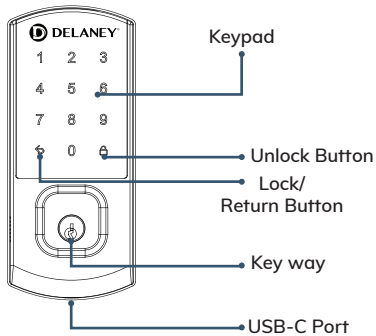
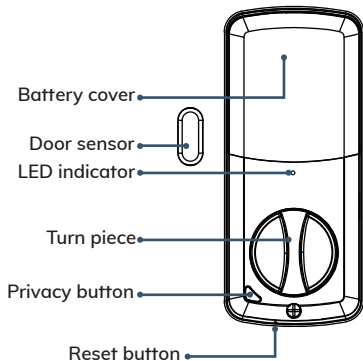
Latch/Strike
Screws



Lock Overview

Interior Assembly

Exterior Assembly



System Alerts

Lock Activity	Buzzer	Interior LED	Keypad
Power-on	beep*2		Lights up White
Button Press	beep*1		White Flashes 1 time
Low Battery		Lights up RED	Return Button lights up RED
Critical Low Battery	beep*3	Lights up RED	Return Button lights up RED
Enable Privacy Mode			1/5/9/3/7 Button Flashes White
Successfully Locked	Long beep*1	Lights up GREEN	
Successfully Unlocked		Lights up GREEN	1/2/3/4/6/7/8/9 Button Flashes White
Unsuccessfully Unlocked		Lights up GREEN	1/5/9/3/7 Button Flashes White
Bluetooth/Wi-Fi Connection	beep*2	Lights up GREEN until APP disconnection	
Wrong Passwords	Long beep*1		1/5/9/3/7 Button Flashes White
Keypad Shutdown	beep*2		1/5/9/3/7 Button Flashes White
Bluetooth Enabled	beep*1		
Bluetooth Disabled	beep*2		
Factory Reset	Long beep		All Buttons Flash White
Door Open	beep for 15 seconds	Flashes RED for 15 seconds	Flashes RED for 15 seconds
Deadbolt Jammed	beep for 15 seconds	Flashes ORANGE for 15 seconds	
Deadbolt Tampered	beep for 3 mins		All Buttons Flash White and Red for 5 seconds

Wi-Fi Gateway Indicator

Power on	NA	Red LED Flashes
Factory Reset	Long beep	Red LED Flashes
Wi-Fi Connection	beep*2	Blue LED Light up
Wi-Fi Disconnection	beep*1	Red LED light up

Definitions

Factory Reset (Smart Lock)

This procedure will delete all User Codes, Wi-Fi, and Bluetooth associated with the lock.

1. Keep the door open and unlocked.
2. Insert the Reset pin into the hole in bottom of the unit and press the Reset Button for 5 seconds until you hear a long beep.

Factory Reset (Wi-Fi Gateway)

Press and hold the reset button on the gateway for 8 seconds until the red LED light flashes and long beeps.

Wrong Entry

After 5 consecutive unsuccessful attempts to open the deadbolt, the deadbolt will emit one long beep, the 13579 button will flash white and the keypad will shutdown for 3 minutes.

Critical Low Battery

If keypad stops lighting up after unlocking one time, then battery power is at a critically low level and the motorized locking will stop working to prevent accidental lock-outs. Please change batteries immediately. When replacing batteries, remove all old batteries before inserting new batteries.

Tamper Alert

In the event the exterior lock is being pried or tampered with, the lock will emit beeps for 3 minutes and keypad flashes white and red for 5 seconds. The keypad will not be locked.

Definitions

Emergency Power

In case battery power is completely lost, please charge it by the USB bank power in the TYPE-C port below the keypad. Minimum voltage requirement is 5V.

Auto Lock

Auto Lock feature will automatically extend the dead-bolt after it has been unlocked.

One-Touch Locking

To easily lock the deadbolt, press the return button.

Privacy Button

If the privacy button is turned on indoors, only the administrator can unlock it outside, and other users cannot unlock it.

Step
1

Screws needed:



Tools



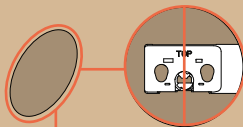
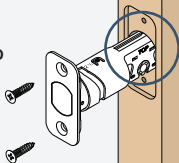
Phillips screwdriver

Do not use a power drill!

Install the latch.

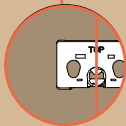
You may have to adjust your latch length. Make sure the slot in the bolt is centered in the hole. Standard latch backset is 2-3/8.”

Make sure
the word
“TOP” is
facing up

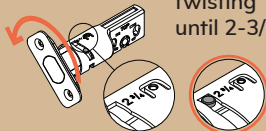


Slot is
centered
in the hole.
No change
needed.

Twist the
faceplate to
extend.



Keep
twisting
until 2-3/4”.



Step
2

Screws needed:

Strike
Screws



Install the provided strike plate into the door frame.



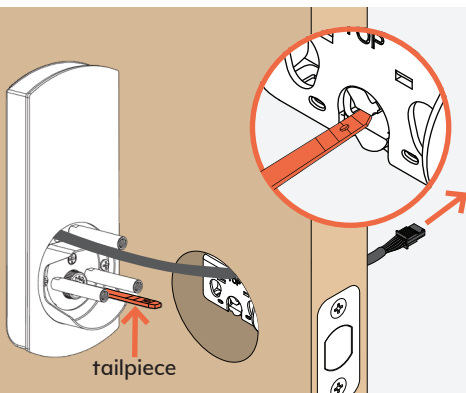
Step
3

Having trouble installing the touchscreen
& tailpiece?

Email orders@delaneyhardware.com

Install the touchscreen assembly to the exterior door as shown.

Route the cable through the door ABOVE the latch. Align the tailpiece as shown and push the touchscreen onto the door.



Step

4

Install the mounting plate to the interior door as shown.

Route the cable over the latch and through the hole on the right side of the mounting plate. Secure the mounting plate with screws. Please reference the “Screws Needed” to match the correct door thickness. Make sure the outside touchscreen is straight before hand-tightening screws.

Screws needed:

Screws for Mounting Plate
M5 x 1.18in

For 1.96 in. door thickness
or

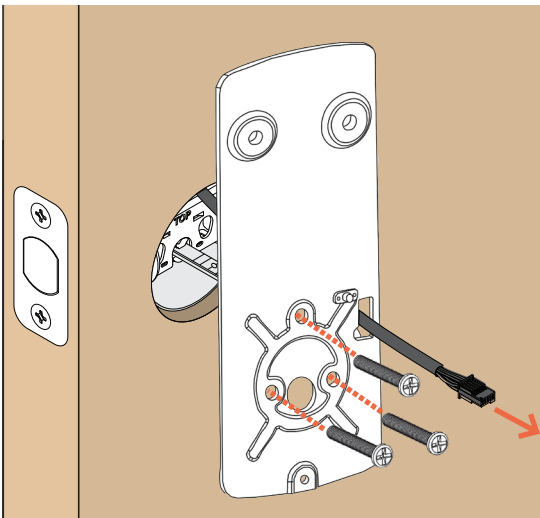
Screws for Mounting Plate
M5 x 1.57in

For 2.36 in. door thickness



Phillips screwdriver

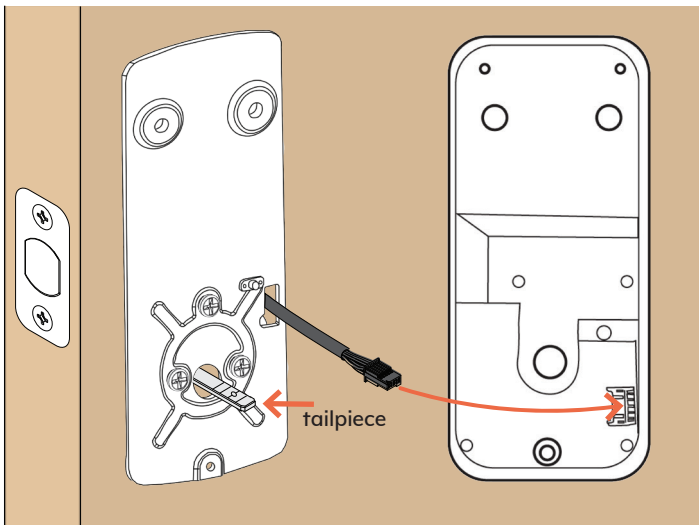
Caution: Do not use a power drill!
You may damage your lock!



Step

5

Connect the cable to the back of interior lock. Once attached you will hear a click. Tuck the cable and connector in the space below the tailpiece.



Step

6

Secure the lock to the door.
If the bump on the tailpiece doesn't align with the slot in the back of the inside assembly, make sure your turn button is vertical (up and down).

Screws needed:

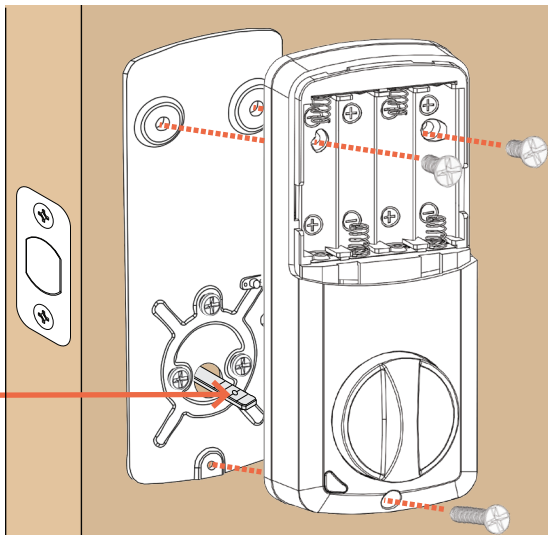
Top Screws for
Smart Lock
M4 x .40in.



Bottom Screw for
Smart Lock
M4 x .55in.



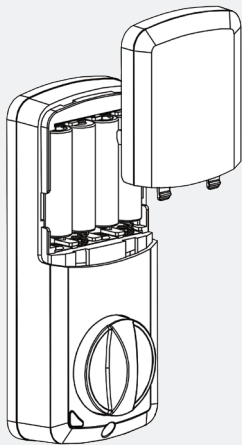
tailpiece
bump



Step

7

Install the four AA batteries (included) in the direction shown on the case and replace the battery cover.



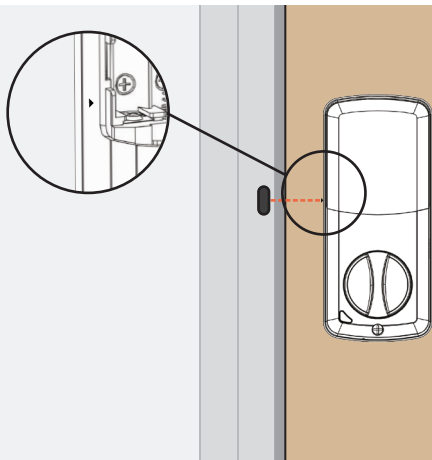
Step

8

Attach the auto-lock door sensor to the interior trim of the door as shown.*

Peel off the adhesive barrier and attach the auto-lock door sensor within 1" to the interior trim aligning to the arrow ► on the side of the interior lock.

Note: Your Exterior Lock will start to beep and blink red. Once the auto-lock door sensor is attached to the interior trim, the beeping will stop.



! *If you do not wish to use the auto-lock door sensor then you **MUST** select in the app under settings to keep the lock in an unlocked position



You've installed your Nexus Smart Lock.

Now download the “Delaney Home” App to your smart device to connect to your Nexus and unlock more features.



Requires iOS 12.0 or later.



Requires Android 7.0 or later.

Features:

- Assign customizable user codes so you can know who accessed your home.
- Remotely lock and unlock your door.
- View event logs to monitor lock activity.
- Schedule controlled access to your home.
- One-touch locking with keyless entry via 10-Digit keypad.

Visit delaneyhardware.com for more information.

APP Guide

Create new account

1. Click the Register icon.

2. Input the email address that you have access to and click next.

*You will need to access your email during the set-up process.

3. Click the verification and find the code in your email box.

*After you retrieving the verification code do not re-enter your email address.

4. Create account passwords and click save icon.

Carrier 9:22 AM 100%

Log in

Log in

Account
Please enter e-mail

Password
Please enter at least 8 letters or numbers

Auto Login

Login

Register

Forgot Password?

Agreed Privacy Policy and User Agreement

Register

Create Delaney Home Account

Email address

Please enter a valid email address

Next

Register

Create Delaney Home Account

Email address

Enter verification code

Go

Account Password

The password must be at least eight characters and contain at least one letter and one number

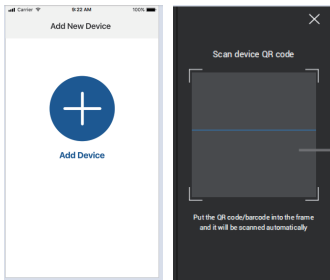
Verify Code

The password must be at least eight characters and contain at least one letter and one number

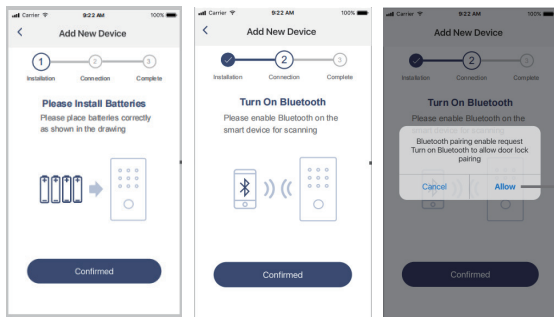
Save

How to Add Your Lock

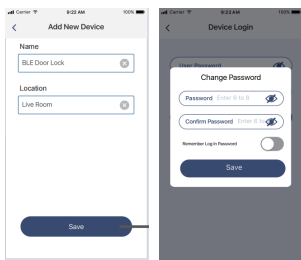
1. Click to add device icon and scan the QR code in battery cover. Make sure your Bluetooth and Wi-Fi are turned on in your device settings.



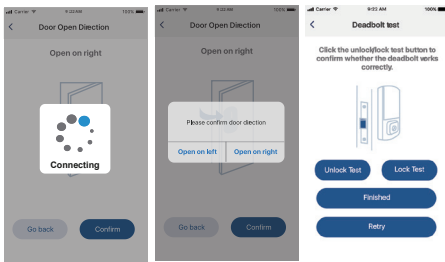
2. Follow the Wizard to complete the Bluetooth door lock pairing.



3. Give your lock a name and setup passwords.

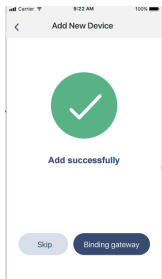


4. Door open Direction Setup



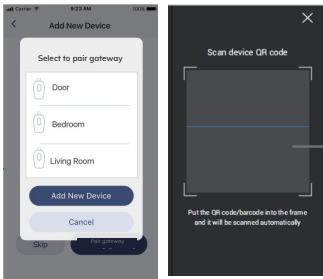
5. Door lock pairing successfully

6. To connect your Nexus to Wi-Fi, select "Binding Gateway." You can skip this step and come back to it at any time.

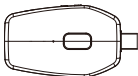


Pairing Wi-Fi Gateway

1. Click the add device icon and scan the QR code on Wi-Fi gateway



What you'll need:

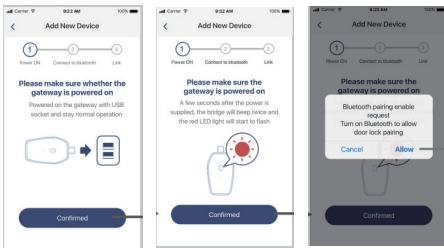


Wi-Fi Gateway

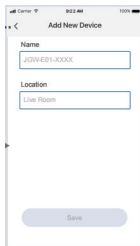


5V/2A USB Power Adapter
(Not Included)

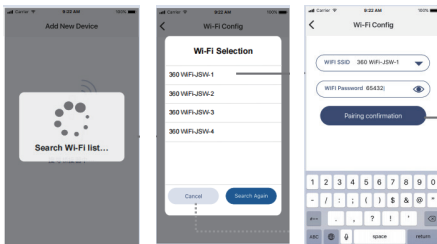
2. Please make sure to plug in the Wi-Fi gateway and it powers on. If the Wi-Fi Gateway does not power on, please email orders@delaneyhardware.com Follow the Wizard to complete the Wi-Fi gateway pairing. The distance between the gateway and lock should be within 30ft from the inside of the door.



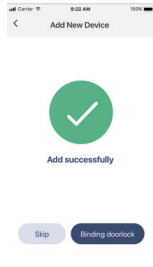
3. Name the Wi-Fi Gateway.



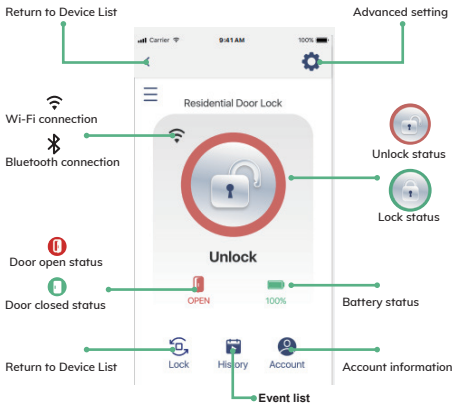
4. Select your Wi-Fi network and input your Wi-Fi password.



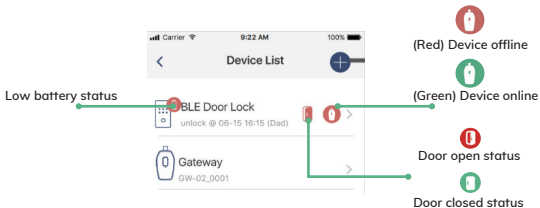
5. Wi-Fi Gateway pairing successfully



Home Page



Device List



Advanced Settings

Keep Unlocked	Allows a door to remain unlocked for a specific period or under certain conditions. When it is activated, the door will not automatically lock, providing continuous access without the need to re-enter codes or use a key.
System Setting	Setup device name, location and time format.
Admin Setting	Identify the Admin information and setup admin passwords. Emergency password allows a user to set up one password that can be used in emergency situations. It would create an emergency event in history or push an emergency message to the admin if you input emergency. The message notification push should be active with gateway pairing.
Add User	Allows admin to add new users to the system.
User List	Identify the users in the list and establish a specific schedule for each of them.
Gateway	Setup the Gateway information.
About	Identify the Firmware and APP version.