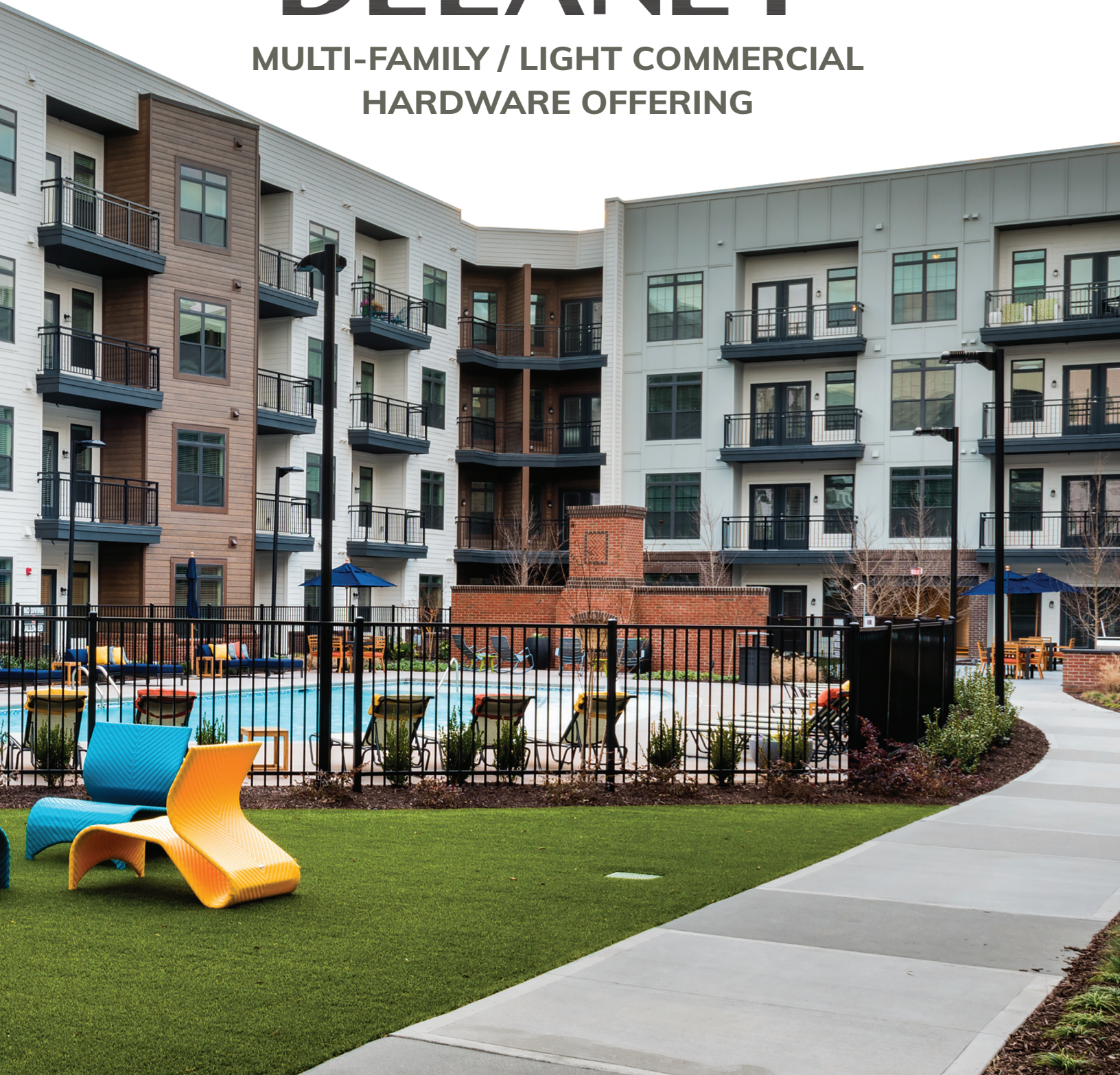




DELANEY®

MULTI-FAMILY / LIGHT COMMERCIAL
HARDWARE OFFERING





WHY

DELANEY®

The Delaney Hardware Difference

Our unwavering commitment and passion to provide you with superior quality hardware and exceptional service distinguishes us from the rest of the industry. Our mission is to make furnishing your home's door hardware refreshingly easy.

Founded over 30 years ago on strong family values, we understand the attention to detail needed to consistently and reliably deliver stylish, durable and secure hardware. We offer three brand tiers of door hardware as well as barndoor, trim and bath hardware. Specializing in providing hardware solutions for residential homes, multi-family buildings, and commercial projects, we provide exceptional service, accurate and on-time deliveries, and superior value for all of your hardware needs.

MULTI-FAMILY HARDWARE SOLUTIONS

1

Multi-Family Smart Lock
for Residence Entry

2

Residential Locksets
for Residence Interiors

3

Door Closers & Exit Devices
for Common Areas, Exterior Doors, & Parking Garages

4

Commercial Locksets
for Common Areas, Clubhouse Amenities, & Parking Garages

For Apartments, Con dos, Student Housing, Assisted Living, & Military Housing



5

Barn Door / Sliding Door Hardware
for Closets, Bathrooms, & Bedrooms

6

Bath Accessories
for Residential & Common Area Bathrooms

7

Door Hinge Hardware
for Commercial & Residential interior/exterior Doors

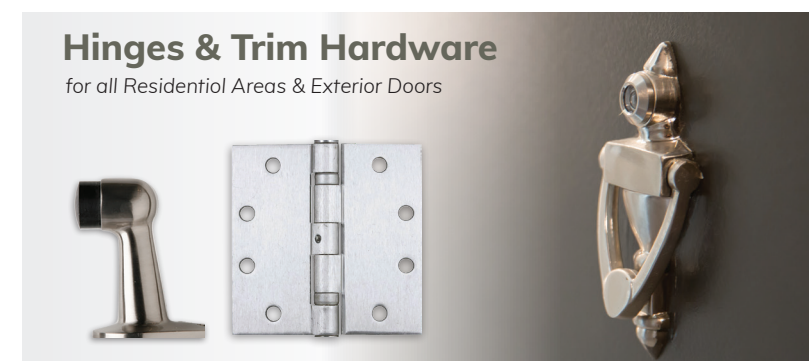
8

Trim Hardware
for all Residential Areas & Exterior Doors

DELANEY®
www.DelaneyHardware.com



UNIT HARDWARE SOLUTIONS



KNOBS & LEVERS

GRADE 3 LEVER OPTIONS

(ADDITIONAL STYLES AVAILABLE)



CIRA®
with Round Rosette
Shown in US26
Also available in US15



DAYTON
Shown in US12P
Also available in US15, US26



KERRY®
Shown in US12P
Also available in US15



LOGAN
Shown in US19 Also available in US15, US15,
US26



VIDA
with Round Rosette
Shown in US15
Also available in US26, US19



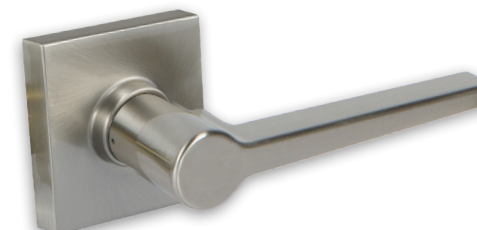
MILTON®
Shown in US26
Also available in US12P, US15, US26D



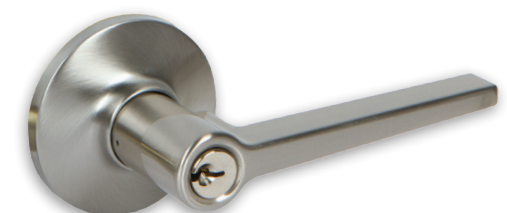
ET LEVER
Shown in US15
Also available in US26D



VIDA
with Square Rosette
Shown in US26
Also available in US15, US12P, US19



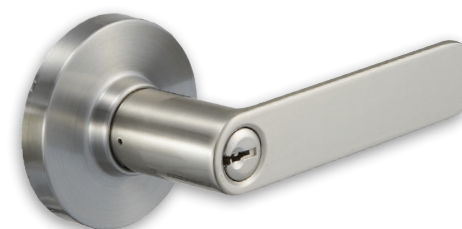
TULINA
with Round Rosette
Shown in US15
Also available in US12P, US26, US19



TULINA
with Square Rosette
Shown in US15
Also available in US26, US19



KIRA®
Shown in US15
Also available in US15, US26



VL LEVER
Shown in US15



HK LEVER
Shown in US15
Also available in US26, US12P, US19



RD LEVER
Shown in US15
Also available in US26, US19

GRADE 3 KNOBS



DERBY™
Shown in US12P
Also available in US15



OLIVIA®
Shown in US12P
Also available in US19, US32D



BELTON®
Shown in US32D
Also available in US19, US12P



GALWAY®
Shown in US32D
Also available in US3

GRADE 2 & 3 DEADBOLTS



GRADE 3 DEADBOLT
Shown in US15
Also available in US32D, US26, US12P, US19



GRADE 2 DEADBOLT
Shown in US15
Also available US3, US19, US12P



ROUND DEADBOLT
available in: US15



SQUARE DEADBOLT
Shown in US26
Also available in: US15, US12P, US19

GRADE 2 KNOBS & LEVERS



ORLYN
Shown in US12P
Also available in: US15, US26



AUBRYN
Shown in US12P
Also available in: US19, US15



LASHBROOK
Shown in US15
Also available in US19



MIRCET
Shown in US15
Also available US19



VONCET
Shown in US15



ENSON
Shown in US15

BARNDOOR HARDWARE



Add a distinctive, stylish upgrade while optimizing space with barn doors. Our Barn-door hardware is available in variety of styles and quality finishes with smooth, quiet wheels and durability to hold up to 330lbs.

FLAT TRACK BARNDOOR SERIES

1000 SERIES STANDARD

Available in Black, Satin Nickel, Brushed Steel, Bronze, and custom finishes



Custom Finishes are also available in 1000 Series such as Patina, Weathered Rust and Satin Brass



3000 SERIES TOP MOUNT

Available in Black, Satin Nickel, Brushed Steel & Bronze

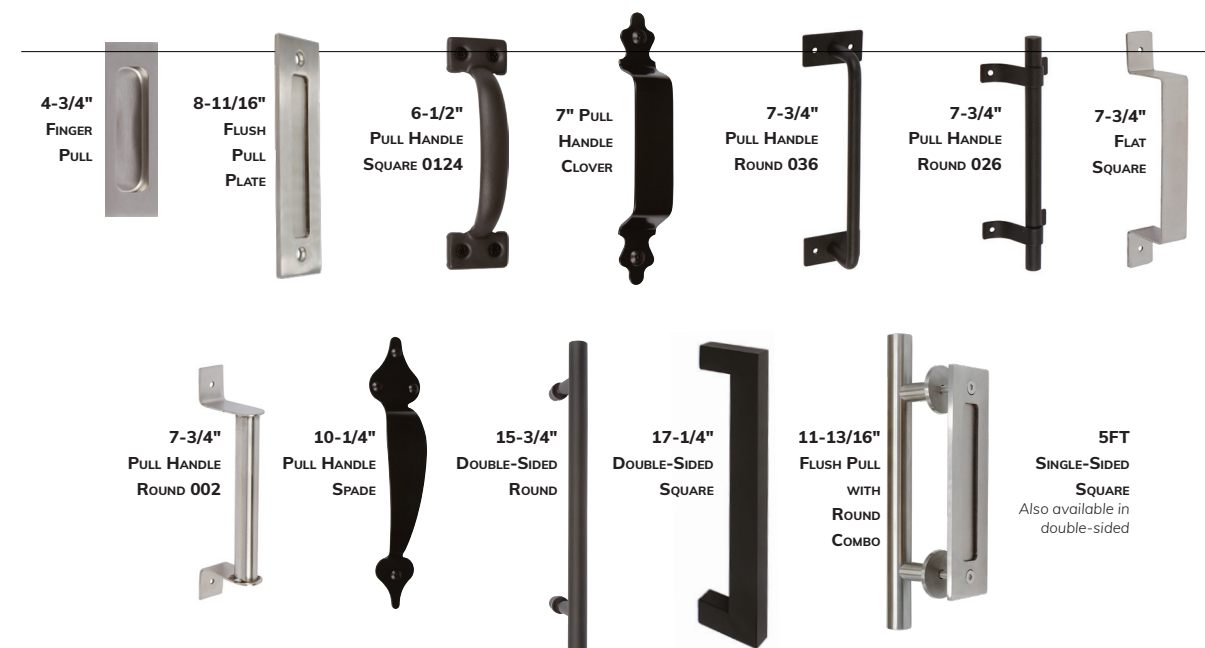


5000 SERIES WAGON WHEEL

Available in Black, Satin Nickel, Brushed Steel & Bronze



PULLS & HANDLES



BATH ACCESSORIES



BATH HARDWARE

1100 SERIES

Shown in US4
Also available in US15, US19, US26, US12P



900 SERIES

Shown in US26
Also available in US4, US15, US19, US12P



800 SERIES

Shown in US12P
Also available in US15, US26



700 SERIES

Shown in US26
Also available in US4, US15, US12P, US19



600 SERIES

Shown in US15
Also available in US26, US12P



500 SERIES

Shown in US19
Also available in US4, US12P, US15, US26



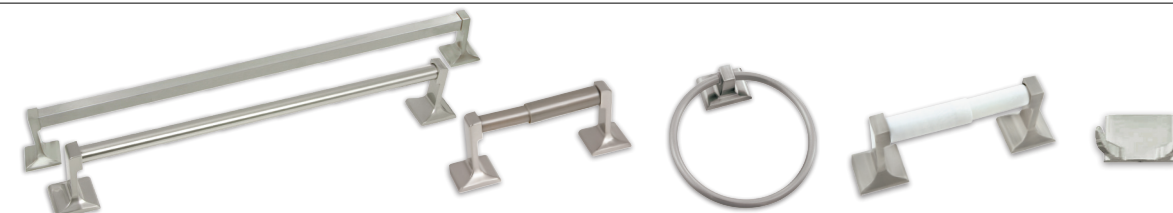
400 SERIES

Shown in US26
Also available in US15, US12P



300 SERIES

Shown in US15
Also available in US26, US12P



200 SERIES

Also available in US26



BATH ACCESSORIES





COMMON AREAS & EXTERIOR SOLUTIONS

- LOCKSETS
- DEADBOLTS
- EXIT DEVICES
- EXIT DEVICE TRIMS
- DOOR CLOSERS



CYLINDRICAL LEVERSETS

GRADE 1 F SERIES / GRADE 2 E SERIES



SD LEVER
Shown in US26D



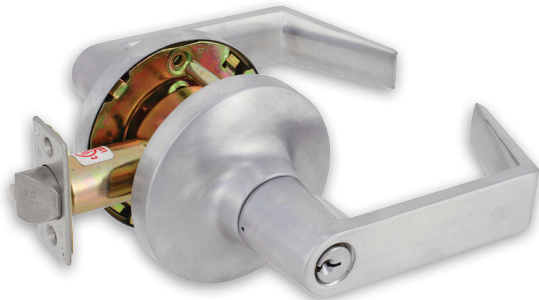
MD LEVER
Shown in US26D
Also available in US10B,
US19



Shown in US10B



Shown in US19



CT LEVER
Shown in US26D

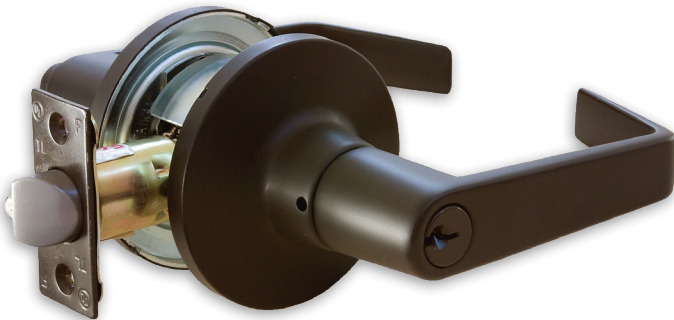
Shown in US10B

GRADE 2 TUBULAR LEVERSETS

RH SERIES



CT LEVER
Shown in US26D
Also available in US10B



CT LEVER
Shown in US10B
Also available in US26D



REGENCY LEVER
Shown in US15



DEADBOLTS

GRADE 1 - LM SERIES



Shown in US26D

GRADE 2 - LU SERIES

(SFIC) INTERCHANGEABLE CORE DEADBOLT
(LU-RC)

Shown in US32D

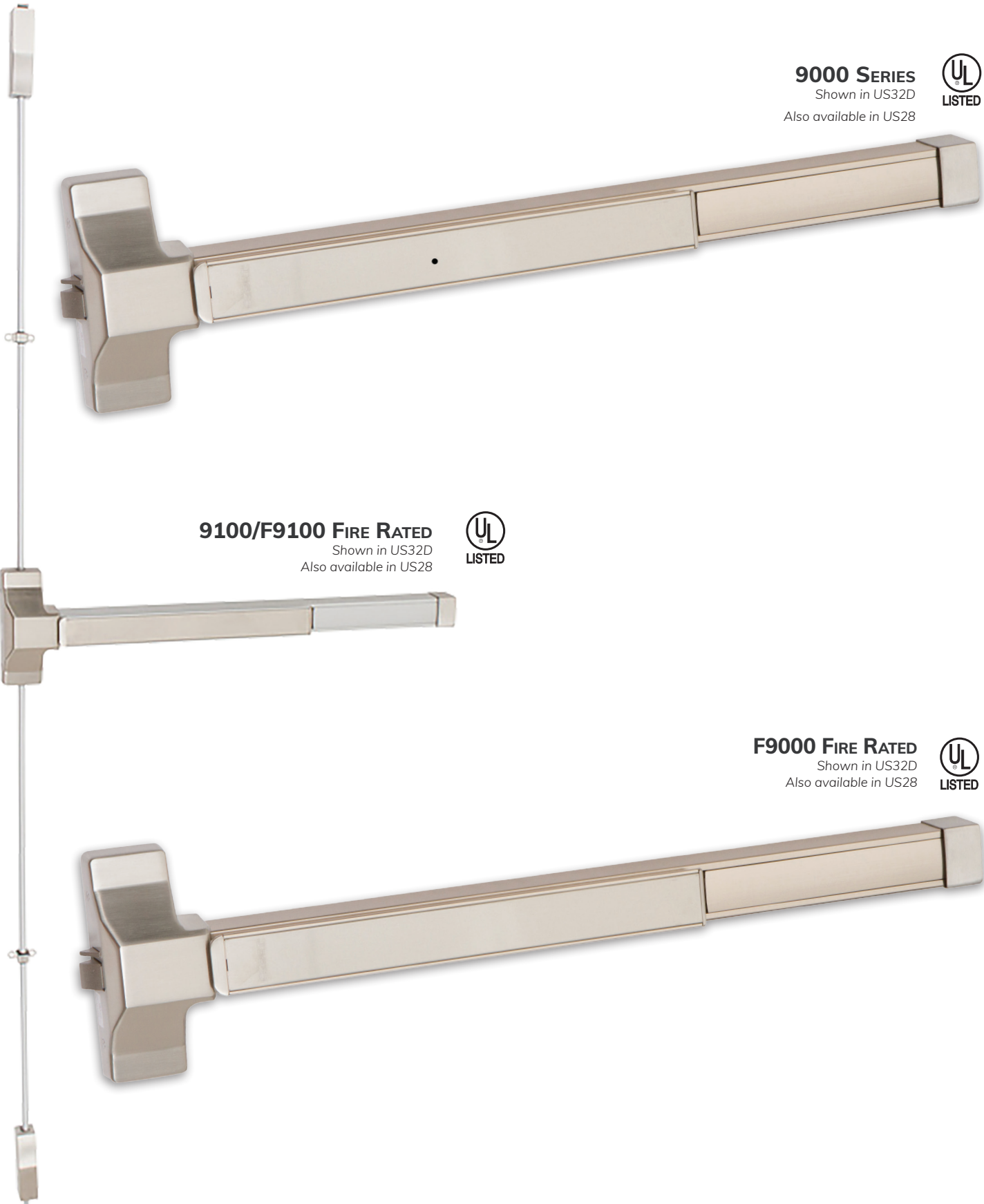


Shown in US19
Also available in US32D, US26D



GRADE 1 HEAVY DUTY EXIT DEVICES

RIM TYPE & VERTICAL ROD EXIT DEVICES



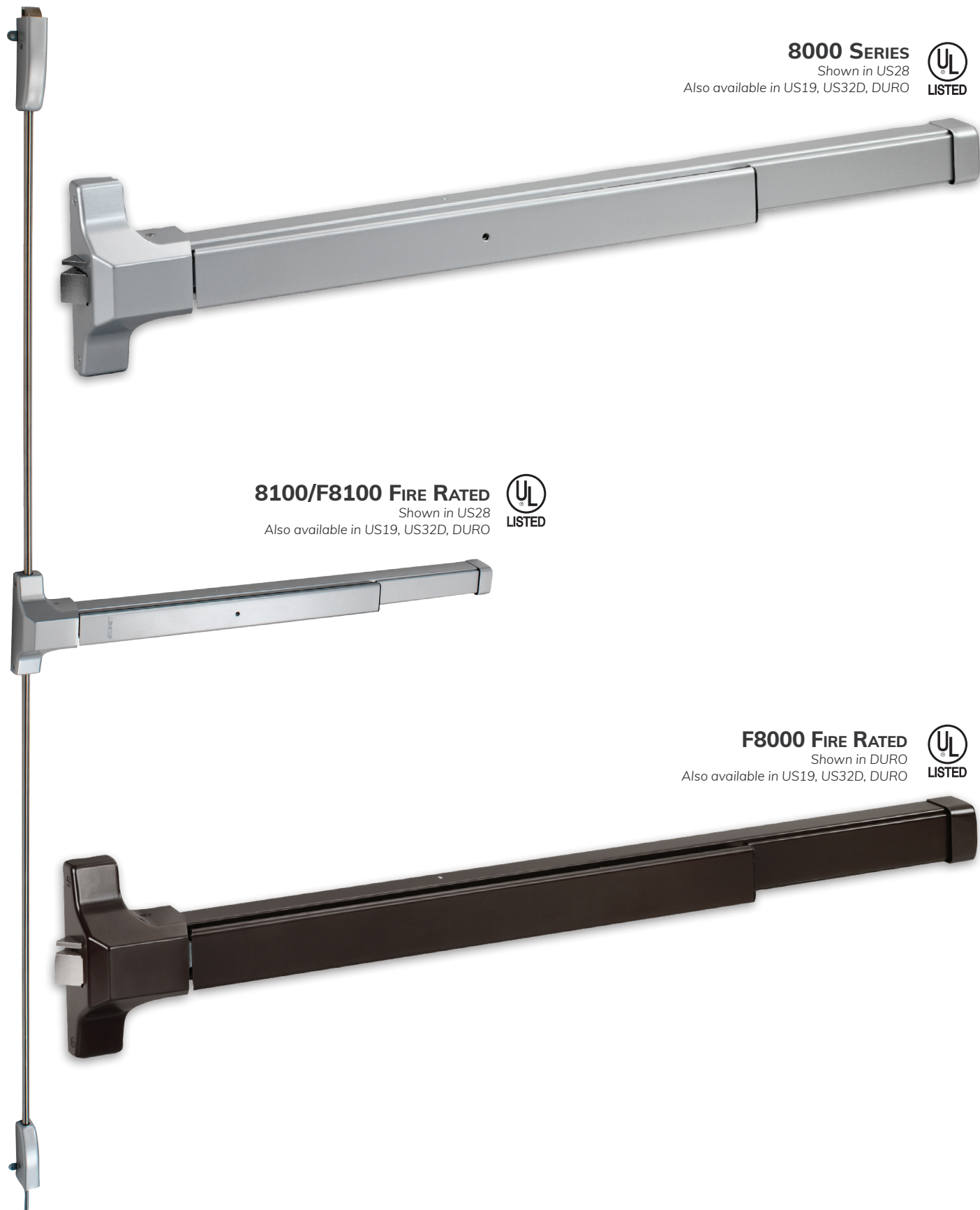
9000 SERIES
Shown in US32D
Also available in US28

9100/F9100 FIRE RATED
Shown in US32D
Also available in US28

F9000 FIRE RATED
Shown in US32D
Also available in US28

GRADE 1 EXIT DEVICES

RIM TYPE & VERTICAL ROD EXIT DEVICES



EXIT DEVICE TRIMS

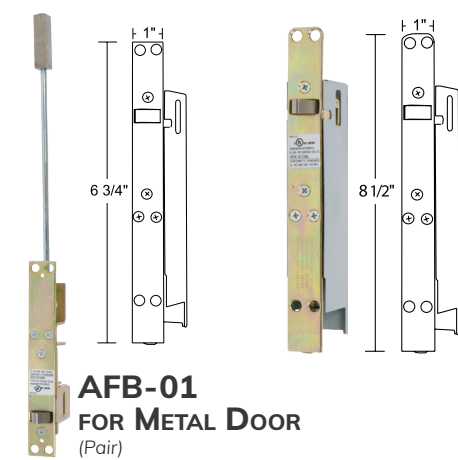
700 SERIES ESCUTCHEON LEVER



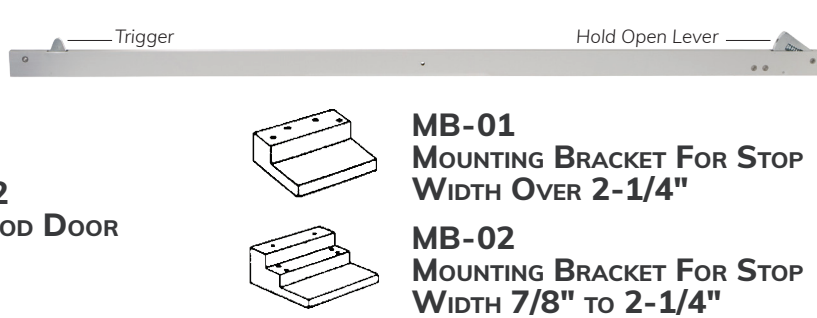
500 SERIES LEVER TRIM



AUTOMATIC FLUSH BOLTS



FIRE DOOR COORDINATOR



DOOR CLOSERS

All Exit Devices Are
 
LISTED

8000 / 8000-DA HEAVY DUTY (GRADE 1)

Shown in Aluminum
Also available in Duro



6000 SERIES MEDIUM-HEAVY DUTY (GRADE 1)

Shown in US19
Also available in Duro, Aluminum



4400 SERIES LIGHT-MEDIUM DUTY (GRADE 1)

Shown in Aluminum
Also available in Duro



3000 SERIES LIGHT DUTY (GRADE 2)

Shown in Aluminum
Also available in Duro



TRIM HARDWARE & HINGES



4" DOOR KNOCKER
WITH VIEWER
Also available with UL viewer



3" JUMBO
SPRING STOP



2-1/4" WALL
BUMPER



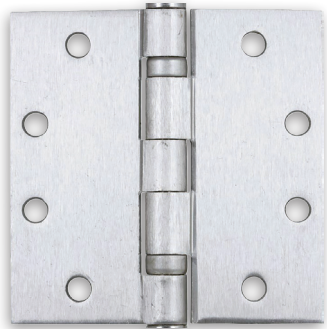
DOOR SAVER HINGE
PIN STOP



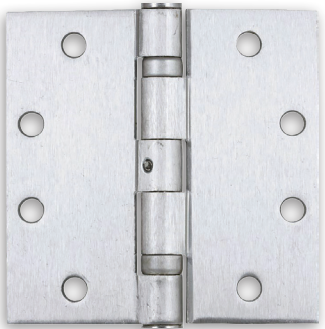
HIGH PROFILE
DOME STOP



CHAIN DOOR STOP WITH VINYL COVER



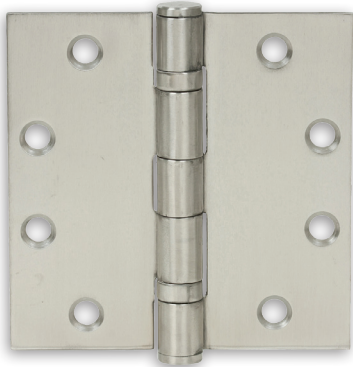
4" BALL BEARING HINGE
Shown in US26D



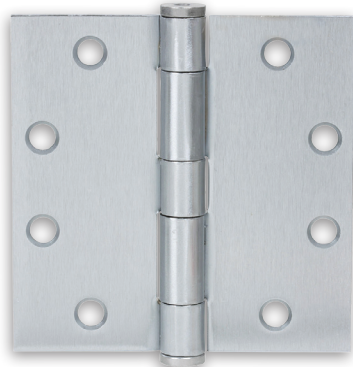
4" NRP BALL BEARING HINGE
Shown in US26D



4" SPRING HINGE
Shown in US26D
Also available in 5/8" Radius



4 1/2" BALL BEARING HINGE
Shown in US32D
Also available NRP




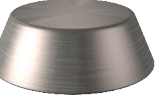




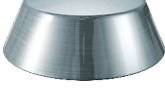





4 1/2" PLAIN BEARING HINGE
Shown in US26D



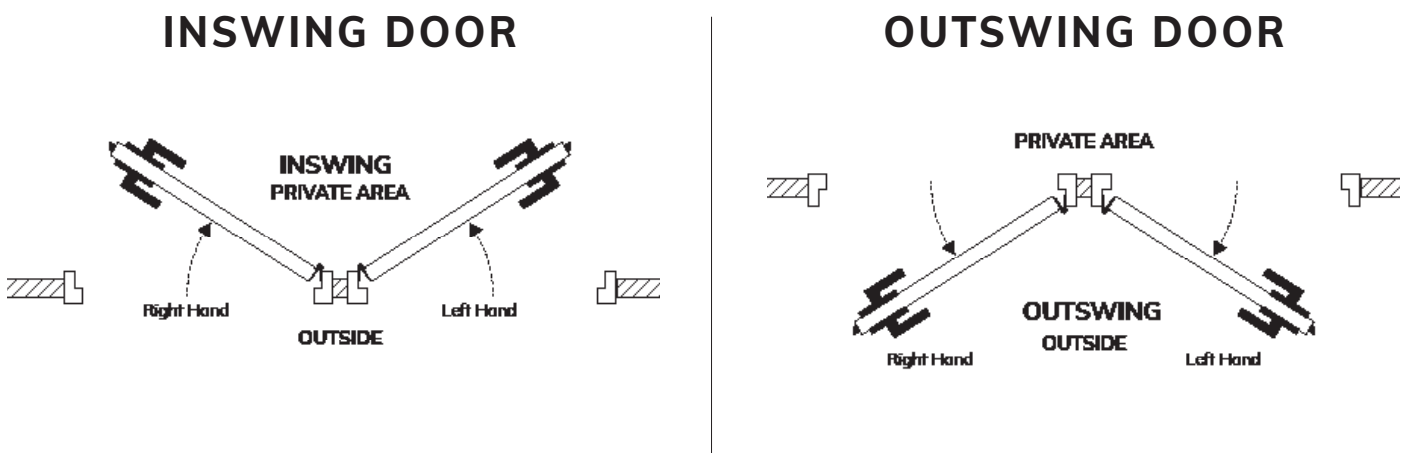
4 1/2" SPRING HINGE
Shown in US26D

AVAILABLE FINISHES

| | | | | | |
|--|--------------------------|---|-----------------------------------|---|--------------------------------------|
|  | US3 POLISHED BRASS |  | PVD LIFETIME POLISHED BRASS |  | US4 SATIN BRASS |
|  | US5 ANTIQUE BRASS |  | US14 POLISHED NICKEL |  | US15 SATIN NICKEL |
|  | US15A ANTIQUE NICKEL |  | US10B OIL RUBBED BRONZE |  | US10BE EDGED OIL RUBBED BRONZE |
|  | US12P TUSCANY BRONZE |  | US19 BLACK |  | US26 POLISHED CHROME |
|  | US26D DULL CHROME |  | US32D STAINLESS STEEL |  | AS ANTIQUE SILVER |
|  | USD15A/AP AGED PEWTER |  | ABK AGED BLACK |  | USD10B/ABR AGED BRONZE |
|  | AL/US28 ALUMINUM |  | DURO DURO BRONZE | | |

HANDING INSTRUCTIONS

Standing OUTSIDE the private area, regardless of whether the door swings towards you or away from you, if the Hinges are on the left, order a Left Hand (LH) lock. Likewise, if the Hinges are on the right, order a Right Hand (RH) lock.





DELANEY®

BRAVURA • DELANEY • CALLAN